

Carbon crossroads

The Intergovernmental Panel on Climate Change (IPCC) explores four potential futures depending what policies governments adopt to cut emissions

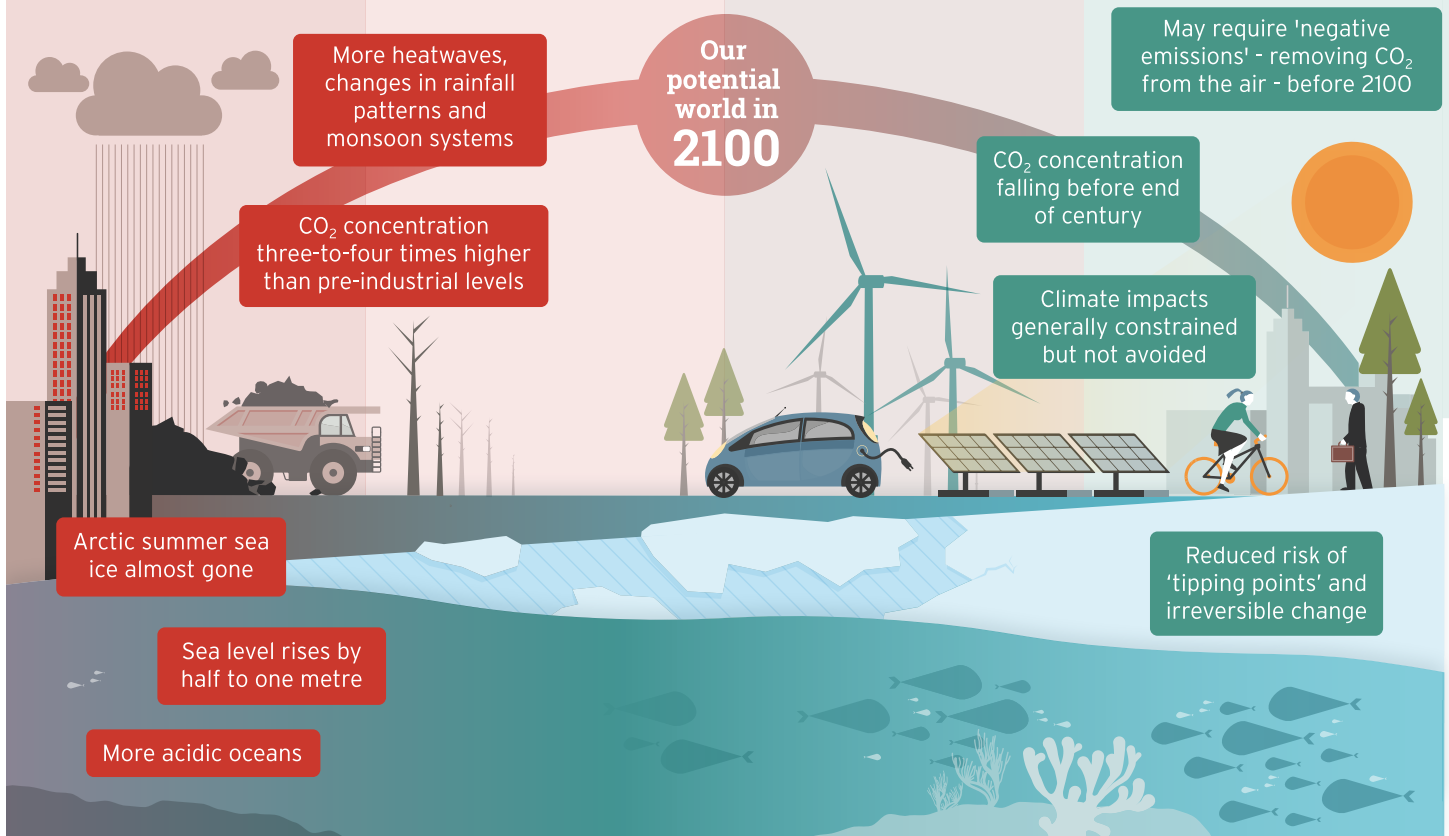


The choices we face now

Business-as-usual	Some mitigation	Strong mitigation	'Aggressive' mitigation
Emissions continue rising at current rates	Emissions rise to 2080 then fall	Emissions stabilize at half today's levels by 2080	Emissions halved by 2050
RCP 8.5*	RCP 6.0	RCP 4.5	RCP 2.6
As likely as not to exceed 4°C	Likely to exceed 2°C	More likely than not to exceed 2°C	Not likely to exceed 2°C

Business impacted by climate change

Business impacted by policy change



*The four RCP (Representative Concentration Pathway) scenarios each project a certain amount of carbon to be emitted by 2100, and as a result lead to a different amount of human-driven climate change. Climate change will continue after 2100 and elevated temperatures will remain for many centuries after human CO₂ emissions cease.